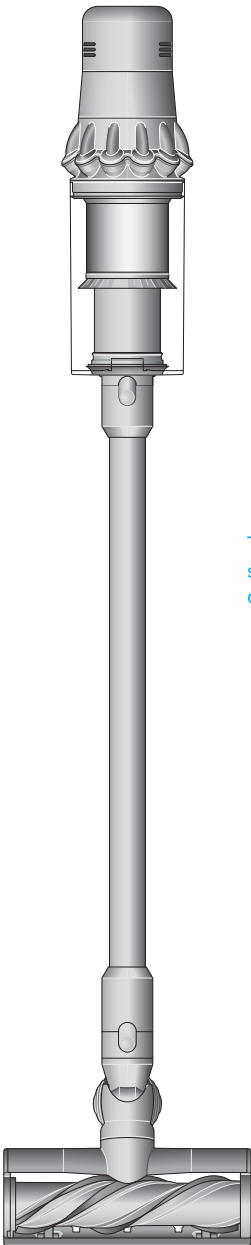


## User manual



Top view of the Dyson V11 machine,  
showing cleaner head, wand, bin  
and main body.

### Contents

In the box

Getting started

The LCD screen

Caring for your floors

Charging your machine

Changing your click-in battery

Emptying your bin

Cleaning your bin

Clearing blockages

Clearing obstructions from your

Motorbar™ cleaner head

Clearing blockages from your

Mini motorised tool

Clearing blockages from your

Hair screw tool

Washing your filter

Washing your Fluffy™

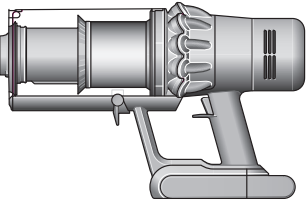
cleaner head brush bar

Cleaning your tools

Looking after your machine

# In the box

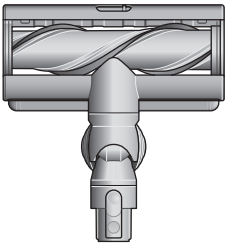
Your machine will come with one or more of these cleaner heads – not all will be included.



Main body showing the handle and bin attached.

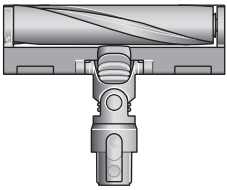
Vacuum cleaner with click-in battery

A brush bar located inside the cleaner head and a suction control slider located on the front.

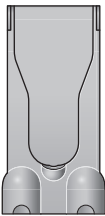


**Motorbar™ cleaner head**  
De-tangling vanes automatically clear wrapped hair from the brush bar as you clean.

A soft fluffy brush bar housed within the cleaner head. There is an electrical connector end that can attach to the end of the wand or directly to the machine.

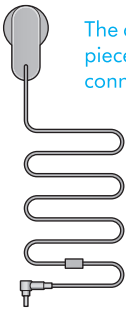


**Fluffy™ cleaner head**  
Soft woven nylon removes large debris, while anti-static carbon fibre filaments extract fine dust from hard floors.



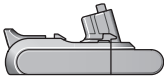
A rectangular dock that needs to be fixed to a wall with screws.

**Wall dock**  
The Dyson cordless vacuum drops into the wall-mounted charging dock, ready for your next clean.



The charger is a one piece unit with the plug, connector end and cable.

**Charger**  
Charges your vacuum with or without a dock.



A rectangular battery with an slanted connector that slides into the handle of the main body of the machine.

**Additional click-in battery**  
Not all models are supplied with an additional click-in battery. You can buy additional click-in batteries at [www.dyson.com](http://www.dyson.com).



**Wand**  
The narrow connector end at the top, this connects to the bin and the wider end at the bottom that connects to the cleaner head or tool.

Some tools may not be included.

You can buy additional tools at [www.dyson.com](http://www.dyson.com).



This tool has a combination of brush head and crevice tool together in one unit. The brush head slides down the crevice tool when needed.

**Combination tool**  
Two tools in one – wide nozzle and brush, for quick switching between cleaning and dusting tasks around your home or car.



A long tool with an angled end.

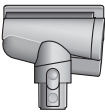
**Crevice tool**  
Engineered for precise cleaning around tricky edges and into hard-to-reach narrow spaces.



A flexible hose engineered from tough wire and durable plastic.

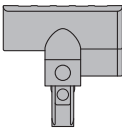
**Extension hose**  
Adds up to 61cm of flexible reach to any tool attachment, to clean up high or down low in your home or car.

A small cleaner head with an angled body housing the motor and an electrical connector to attach to the wand or directly to the machine.



**Hair screw tool**  
Anti-tangle conical brush bar spirals hair off and into the bin. Motor-driven cleaning for smaller spaces.

A small cleaner head with a body housing the motor and an electrical connector to attach to the wand or directly to the machine.



**Mini motorised tool**  
Motorised brush bar, concentrated in a smaller head to remove stubborn dirt from mattresses, upholstery and stairs.



With an elbow joint, fitted between the bin and the tool.

**Low-reach adaptor**  
Bends to comfortably reach down low. Engineered to clean further under low furniture by adjusting the wand angle up to 90°.



A long tool with an angled end.

**Light pipe crevice tool**  
Crevice tool with LED lights lets you reach into dark, narrow spaces and see where you're cleaning.



Pliable bristles and felt bumper strip on a narrow, tapered tool.

**Soft dusting brush**  
Enclosed in a skirt of soft nylon bristles for gentle, vacuum-assisted dusting of delicate objects and surfaces.



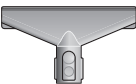
A short nozzle with stiff bristles on the underside.

**Stubborn dirt brush**  
Stiff nylon bristles dislodge ground-in dirt from coarse carpets, high traffic areas and car interiors.



**Up-top adaptor**  
Bends and locks at different angles. Fits any compatible tool for effective cleaning in hard-to-reach high areas of your home.

A wide, triangular shaped nozzle.



**Fabric and mattress tool**  
Removes dust, dirt and allergens from mattresses and upholstery.

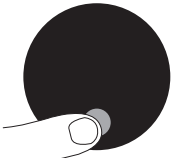
A plastic clip that attaches to the wand



**Wand clip**  
Clips to your vacuum's wand to hold tools.



# Getting started



### Power modes

Your machine has three power modes for different tasks. Change power modes quickly using a single button.



The screen showing the machine set to Eco mode with a full battery in green to show that this will give the longest battery life of the three modes.

### Eco mode

Maximum run time for longer cleans all around your home.



The screen showing the machine set to Med mode with a blue battery showing that this will give a medium length of battery life.

### Med mode

The optimum balance of power and run time.



The screen showing the machine set to Boost mode with a red battery to show that this will give the shortest battery life of the three modes.

### Boost mode

Designed for intensive spot cleaning of ground-in dirt.

Location of the Selection button on the screen on the filter end of the machine.

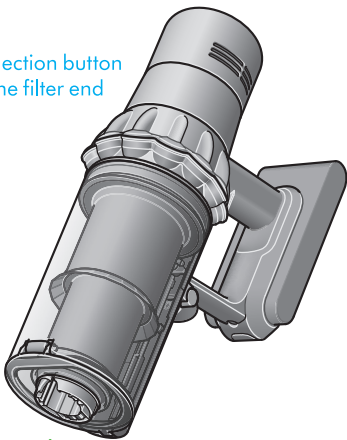
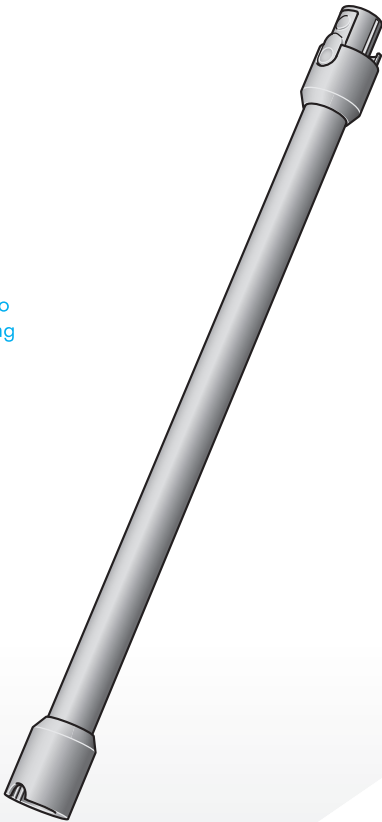
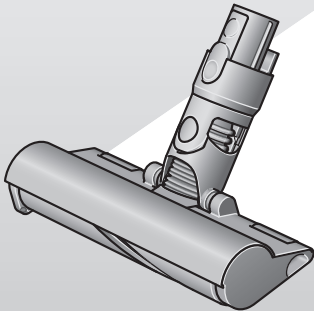


Diagram showing the connection of the wand onto the main body, with the wand release button aligned with the top of the main body.



Arrow showing the end of the wand connecting to the cleaner head.

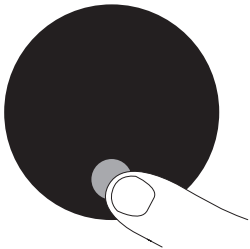


# The LCD screen

The LCD screen shows performance, including the cleaning mode selected, remaining run time, filter maintenance and blockage information.

## Settings menu

Control the settings on your machine using the Selection button. To enter the settings menu, press and hold the button until the menu screen appears. Tap to scroll through the options available.



The Selection button on the screen being pressed.

## Change language

To change the language on your screen, press the button and hold until the language list appears. Release the button.

Tap the button to scroll through the language list to your preferred language. Press and hold the button until the countdown ends.

A green tick will appear on the screen to show your language selection is complete.

To cancel your selection, release the button during the countdown.



Two screens, the first with the language list and then the tick screen to show that the language has been successfully changed.

## Change alert settings

You can turn the alert motor pulse off. Your motor will no longer pulse but run time alert information will continue to be displayed on the LCD screen when your machine needs your attention.

Turning off alerts will not turn off the blockage alert pulsing. This is to ensure you clear any blockages, preventing damage to your machine.

Tap to scroll through the settings menu. Select the 'Alerts' option.

Scroll to select on or off. Hold the button until the countdown ends and a tick appears on the screen. To cancel your selection, release the button during the countdown



The screen with an amber warning triangle to demonstrate an alert.

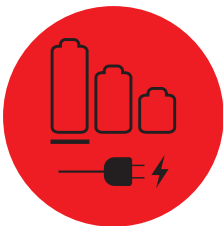
Run time countdown

When the battery needs charging, your machine will pulse three times and a low run time icon will appear on the screen.

When your battery is empty, a red warning icon will appear on the screen.



The screen with a battery time remaining shown as a number and as a half filled battery.



A red screen with an icon with a plug being connected to the power supply. This demonstrates the battery is empty and needs charging.

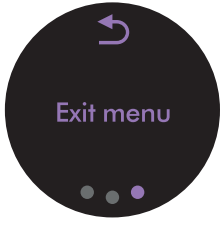
Battery health

To get the best performance and life from your battery, use Eco or Auto/Med mode.



The battery health is shown on the batteries on the screen.

Exit settings menu



Screen with Exit menu wording and return icon.

# Caring for your floors

Check that the underside of the cleaner head or tool is clean and free from any objects that may cause damage.

Before vacuuming your flooring, rugs, and carpets, check the manufacturer’s recommended cleaning instructions.

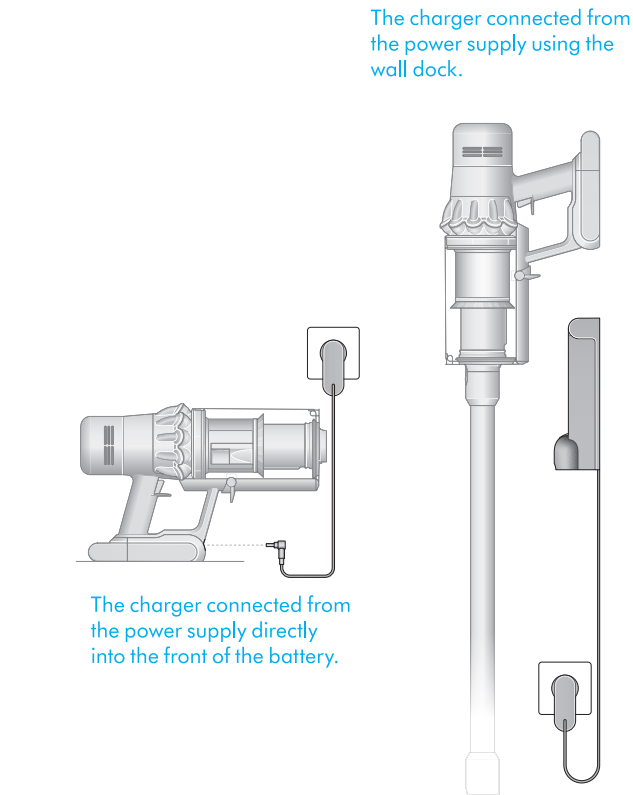
The brush bar on your machine can damage certain carpet types and floors. Some carpets will fuzz if a rotating brush bar is used when vacuuming. If this happens, we recommend vacuuming without the motorised floor tool and consulting with your flooring manufacturer.

## Charging your machine

It’s important to fully charge your new machine before using it for the first time, and after every clean. This is because the battery and monitoring system’s algorithm ‘learns’ over time, and fully charging your machine helps it to more accurately calculate and display remaining run time.

- Connect to the charger either directly or in the dock.
- The blue LEDs on either side of the battery will flash during charging.
- When the battery is fully charged, both LEDs will light for 5 seconds.
- Your battery is fully charged when the display shows 100%.

Your machine won’t operate or charge if the ambient temperature is below 5°C (41°F). This is designed to protect both the motor and battery.



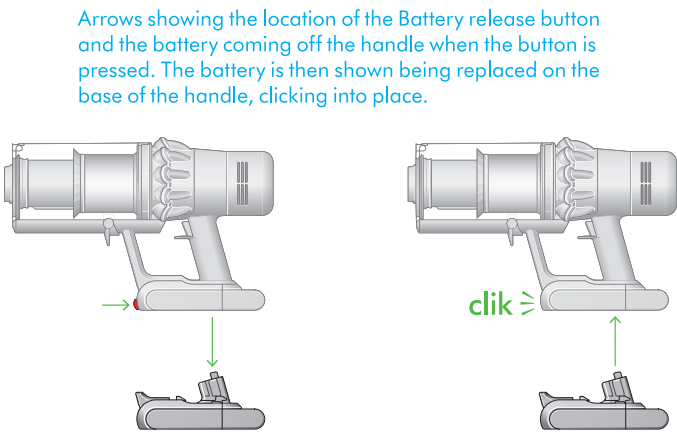
## Changing your click-in battery

If you have additional click-in batteries, we recommend that you alternate the batteries to maintain even performance.

**Removing your battery**  
Push the Battery release button on the handle and slide the battery off your machine.

Charge the battery.

**Refitting your battery**  
Align your battery with the handle and slide it in. Push firmly until it clicks into place.



# Emptying your bin

Empty as soon as the dirt reaches the MAX level – don't overfill. Using your machine when the dirt is above the MAX line may affect the performance and require more frequent filter washing.

**Remove your wand**  
Press the red wand release button, on the top of the wand, and pull the wand away from the bin.

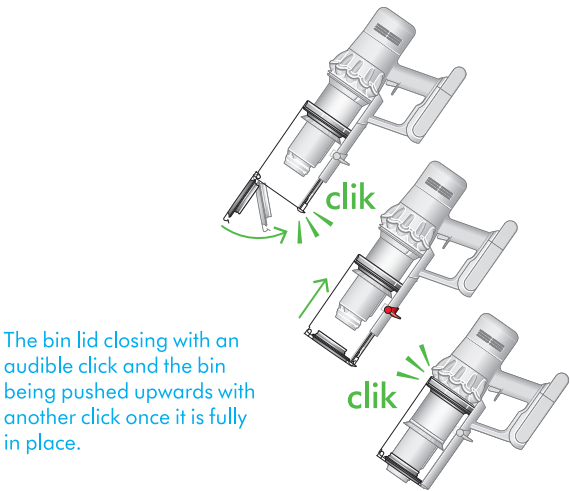
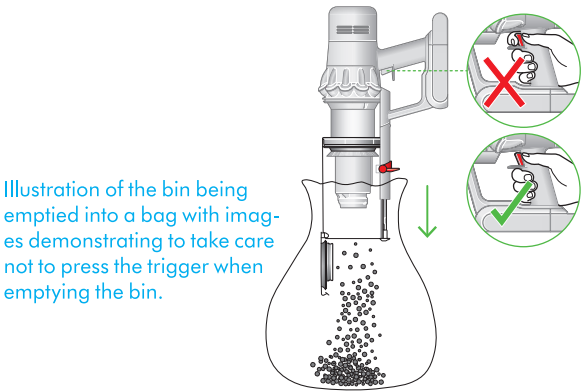
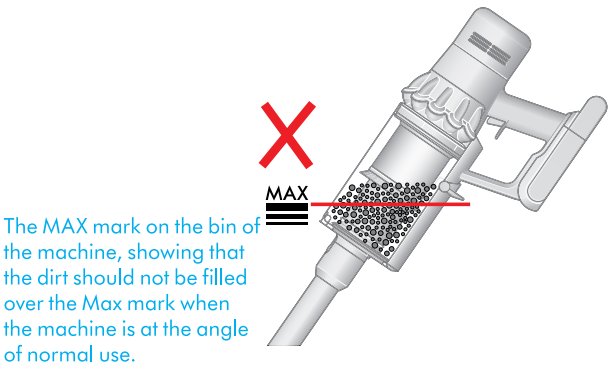
**Release the dirt**  
Hold the machine over the bin, pointing downwards.

Firmly push the red bin release button. The bin will slide down, cleaning the shroud as it goes, and the bin base will open.

The bin base won't open if the red bin release button isn't pushed down all the way.

**Minimise dust contact**  
Cover your bin tightly in a dust proof bag while you empty. Remove your bin carefully, seal the bag tightly and dispose.

**Close the bin**  
Push the bin base upwards until your bin and bin base click into place.



# Cleaning your bin

**Remove your bin**  
If it is necessary to clean your bin, empty it as shown in the 'Emptying your bin' section.

Press the red button located on the bin runner to release the bin and slide your bin off the runner.

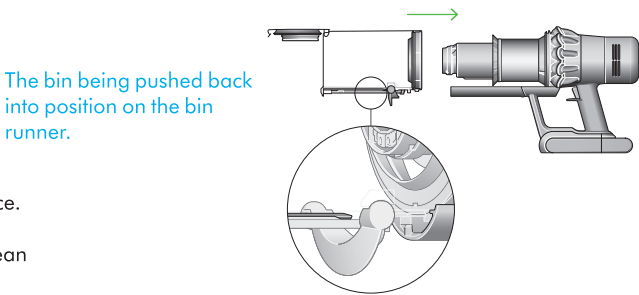
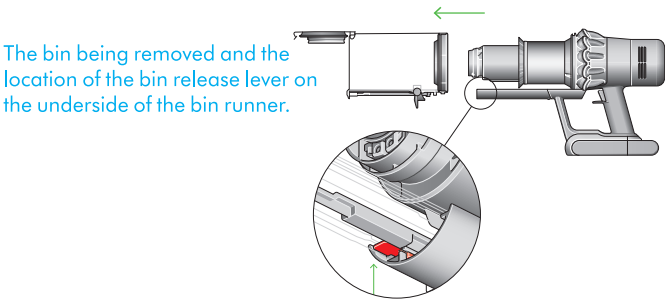
Only use a damp, lint-free cloth to clean your bin.

Make sure that your bin and seals are completely dry before replacing.

**Refit your bin**  
Insert the spine on to the bin runner.

Close your bin by pushing the bin base upwards until the bin and bin base click into place.

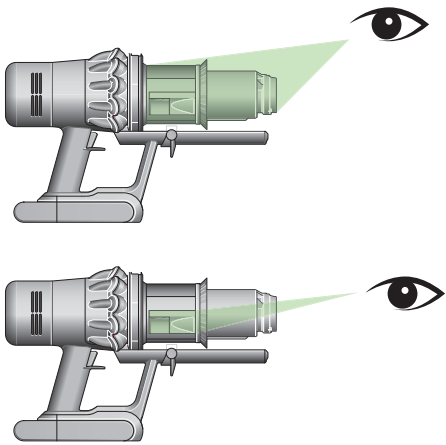
Your bin isn't dishwasher safe and the use of detergents, polishes or air fresheners to clean your bin isn't recommended, as it may damage your machine.



# Clearing blockages

- Disconnect your machine from the charger before looking for blockages. Be careful not to touch the trigger and be aware of sharp objects.
- Leave your machine to cool down before looking for blockages.
- Don't use your machine when looking for blockages as this could cause injury.
- If your machine detects a blockage, the motor will pulse and you won't be able to use your machine until the blockage has been cleared.
- If you try to use your machine when the motor is pulsing, it will automatically cut out.

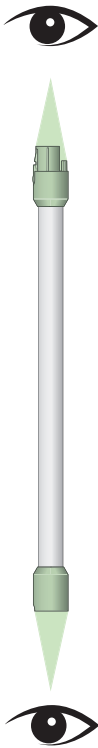
With the bin removed, check for blockages, paying particular attention to the air inlet, located at on the right-hand side of the machine just below the point where the bin joins the main body of the machine.



- Check the main body**  
Remove the bin and check for blockages in the main body of your machine.
- Make sure any blockages are completely cleared and all parts are fitted before using your machine.

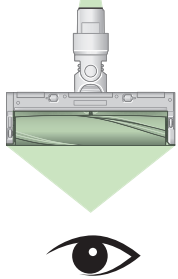
- Check the wand and cleaner head**  
Check the wand for blockages.
- Check your cleaner head for blockages, following the instructions to remove the brush bar, where necessary.

With the wand removed from the machine, check for blockages at both ends of the wand.



- Re-assemble your machine**  
Refit all parts securely before using your machine.
- Clearing blockages isn't covered by your guarantee.

Turn the cleaner head over to check for obstructions on the brush bar and air inlet.



# Clearing obstructions from your Motorbar™ cleaner head

Your Motorbar™ cleaner head doesn't have a washable brush bar. To maintain optimum performance, check your brush bar regularly and clear any obstructions.

Make sure your machine is disconnected from the charger and take care not to touch the trigger.

## Remove your brush bar

Don't put any part of your machine in a dishwasher or use detergents, polishes or air fresheners.

Press the cleaner head release button on the end of the wand. Place the cleaner head upside down.

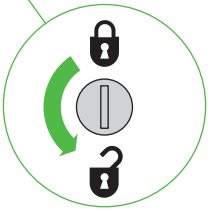
Use a coin to unlock the end cap.

Twist the end cap and remove it from your brush bar. Don't wash the end cap.

Slide your brush bar out of the cleaner head.



The removal of the brush bars showing the lock in a horizontal position and the unlock symbol in the 6 o'clock position and the lock symbol in the 12 o'clock position.



## Look for obstructions

Clear any debris from your brush bar.

Check inside the cleaner head and remove any debris or blockages.

Your Motorbar™ cleaner head and brush bar aren't washable. Wipe over with a damp lint-free cloth.

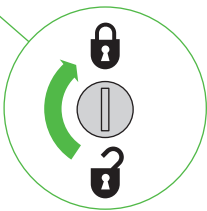
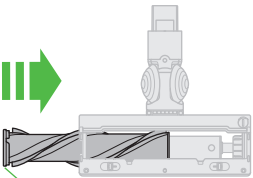
## Replace your brush bar

Push the end cap back on to your brush bar and slide it back into the cleaner head.

Turn the end cap into the locked position.

Your cleaner head isn't washable and should only be wiped over with a damp lint-free cloth.

The brush bar reinserted into the cleaner head and the end cap rotated to the locked position.





# Clearing blockages from your Mini motorised tool

Your Mini motorised tool doesn't have a washable brush bar. To maintain optimum performance, check your brush bar regularly and clear any obstructions.

Make sure your machine is disconnected from the charger and take care not to touch the trigger.

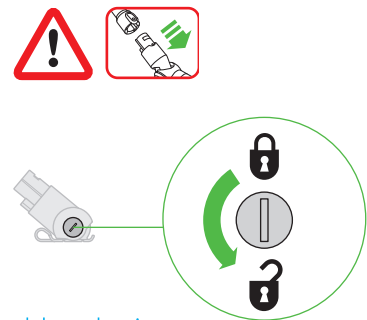
## Remove your brush bar

Don't put any part of your machine in a dishwasher or use detergents, polishes or air fresheners.

Use a coin to unlock the end cap.

Twist the end cap and remove it from your brush bar. Don't wash the end cap.

Slide your brush bar out of the cleaner head.



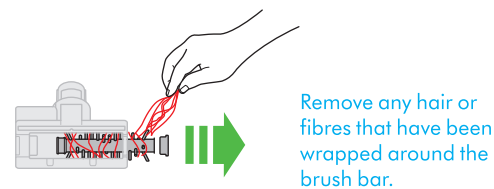
The removal of the brush bars showing the lock in a horizontal position and the unlock symbol at 90° anti-clockwise and lock symbol at 90° clockwise.

## Look for obstructions

Clear any debris from your brush bar.

Check inside the cleaner head and remove any debris or blockages.

Your Mini motorised tool and brush bar aren't washable. Wipe over with a damp lint-free cloth.

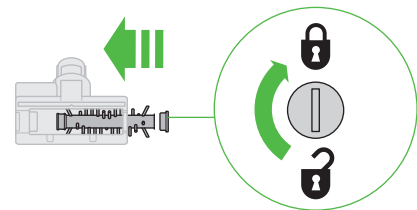


## Replace your brush bar

Push the end cap back on to your brush bar and slide it back into the cleaner head.

Turn the end cap into the locked position.

Your cleaner head isn't washable and should only be wiped over with a damp lint-free cloth.



The brush bar reinserted into the cleaner head and the end cap rotated to the locked position.

# Clearing blockages from your Hair screw tool

Your Hair screw tool doesn't have a washable brush bar. To maintain optimum performance, check your brush bar regularly and clear any obstructions.

Make sure your machine is disconnected from the charger and take care not to touch the trigger.

## Remove the cover and brush bar

Remove the Hair screw tool from the wand or machine.

Push the base plate open. Press the red lever down to release the cleaner head cover.

Pull the cleaner head cover off the main body of the tool.

## Look for obstructions

Put your brush bar firmly to remove it from the main body.

Check and remove any obstructions from all three parts of your Hair screw tool.

Your Hair screw tool isn't washable. Wipe over with a damp lint-free cloth.

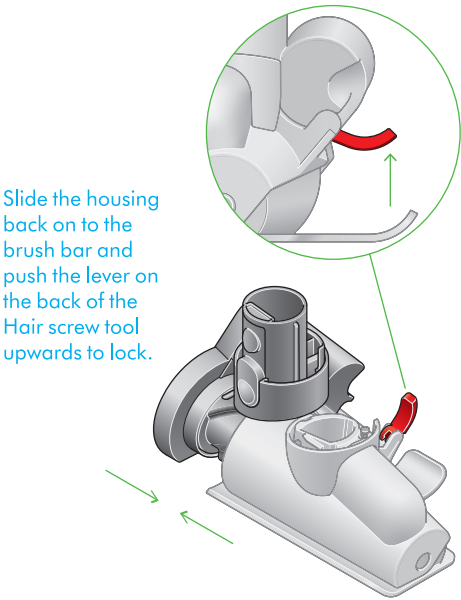
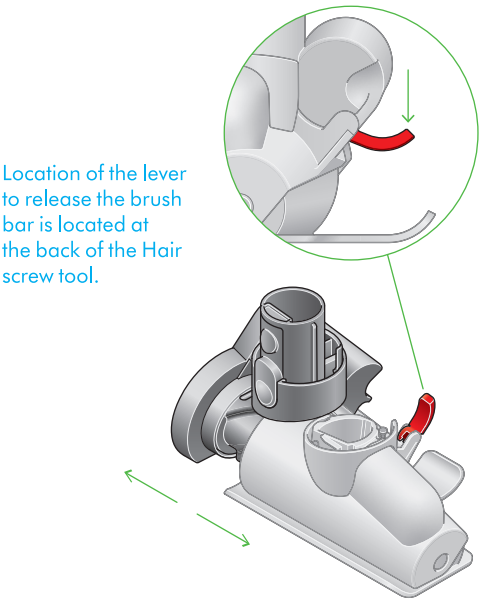
Don't put any part of your machine in a dishwasher or use detergents, polishes or air fresheners.

## Re-assemble Hair screw tool

Put your brush bar back into position and press firmly until it clicks back into position.

Check the red locking lever is in the unlocked position. Align the cleaner head cover with the guide on the main body. Push it down until it clicks into position.

Push the red locking lever up until it clicks into position and push the base plate back into place.



Hair screw tool may not be included in your model.

You can buy additional tools at [www.dyson.com](http://www.dyson.com).

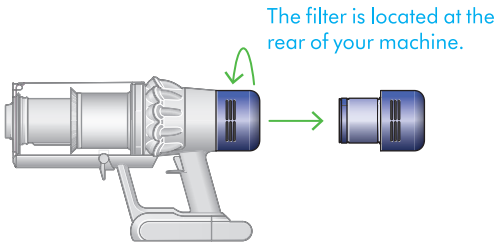
# Washing your filter

Wash your filter at least once a month to maintain optimum suction power.

For more information and support videos for your machine go online: [www.dyson.com/support](http://www.dyson.com/support)

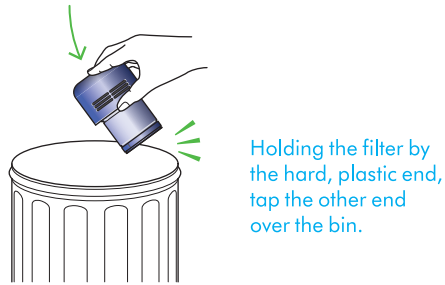
## Twist off your filter

Twist your filter anti-clockwise and pull it away from your machine.



## Tap your filter

Before washing your filter, tap it gently over a bin to remove any loose dust and debris.



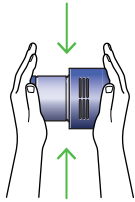
## Wash your filter

Wash with warm, running tap water – gently rubbing your filter with your fingers to remove the dirt.

Filter held in upright position, with the wider end in the palm of a hand. Water running from a tap into the narrower end.



Filter with hand over the open end with arrows showing a shaking motion.



## Fill and shake

Place your hand over one end of your filter.

Fill the filter with warm tap water.

Place your hand over the open end of the filter and shake it firmly to remove trapped dirt and debris.

Repeat these steps until the water runs clear.

## Shake and dry

Empty the filter and shake firmly to remove excess water.

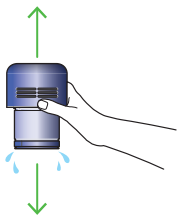
Keep shaking until there's no water coming from the filter.

Place your filter end up, as shown.

Place the filter on its end and leave to dry for at least 24 hours in a well ventilated, warm place.

Don't dry your filter in a tumble dryer, microwave or near a naked flame.

Important: your filter must be completely dry before you put it back into the machine. Your machine could be damaged if used with a damp filter.



A hand holding the filter with the narrow end pointing downwards with droplets of water being shaken from the filter and again, with the end pointing downwards shaking water out.



The filter is left to dry with the pleated filter end facing upwards.

# Cleaning your tools

Don't put any part of your machine in a dishwasher or use detergents, polishes or air fresheners.

Wipe with a damp, lint-free cloth, without touching the connector end.

Make sure your tools are completely dry before using.



Combination tool



Crevice tool



Extension hose



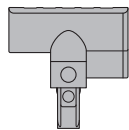
Flexi crevice tool



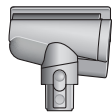
Up-top adaptor



Low-reach adaptor



Mini motorised tool



Hair screw tool



Soft dusting brush



Stubborn dirt brush



Fabric and mattress tool

# Looking after your machine

To always get the best performance from your machine, it's important to clean it regularly and check for blockages.

## **Look after your machine**

If your machine is dusty, wipe with a damp lint-free cloth.

Check for blockages in the cleaner head, tools and main body of your machine.

Wash your filter regularly and leave to dry completely.

Don't use detergents or polishes to clean your machine.

## **Look after your battery**

To get the best performance and life from your battery, use Eco or Auto/Med mode.

Your machine won't operate or charge if the ambient temperature is below 5°C (41°F). This is designed to protect both the motor and battery.

## **Your serial numbers**

You can find your serial numbers on your machine, battery and charger. Use your serial number to register.

For more information and support videos for your machine go online: [www.dyson.com/support](http://www.dyson.com/support)